

# FortiClient Install and Setup Guide

## for Windows & MacOS

Download and Install FortiClient VPN

For Windows System

[Setup Guide VPN \(Windows\)](#)

For MacOS System

[Setup guide VPN \(MacOS\)](#)

[Disconnection VPN \(MacOS\)](#)

## Download and Install FortiClient VPN

- Prepare FortiClient VPN file for installation via <https://www.forticlient.com/downloads>
- Prepare Username / Password for VPN (Same Login Internet).

1. Go to the website <https://www.forticlient.com/downloads> for FortiClient installation file
2. Find to header name is FortiClient *VPN*

**FortiClient VPN**

The VPN-only version of FortiClient offers SSL VPN and IPsecVPN, but does not include any support. Download the best VPN software for multiple devices.

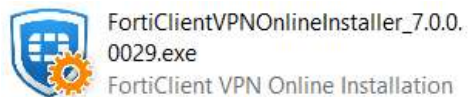
**Remote Access**

- ✓ SSL VPN with MFA
- ✓ IPSEC VPN with MFA

 Download VPN for Windows	 Download VPN for MacOS	 Download VPN for Linux
		
 Download VPN for iOS	 Download VPN for Android	 Download VPN for Linux
		

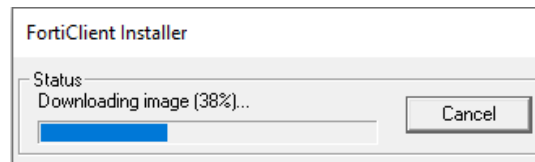
### For Windows system

1. Download VPN for Windows



\*Example FortiClient VPN installation file

2. Click on the installer icon, program will be show downloading status via the Internet (speed depends on user's network connection)



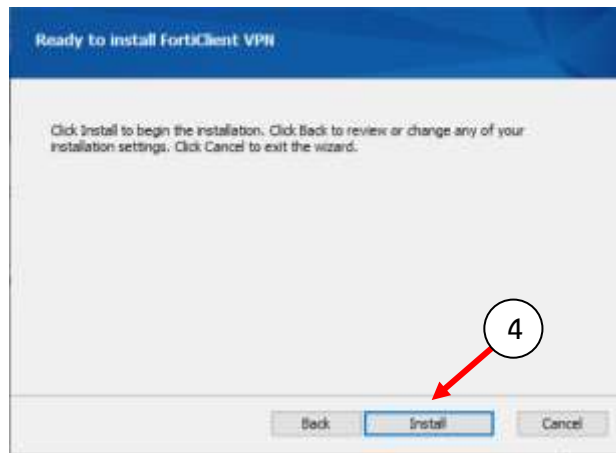
3. When the download is complete, Click check box “Yes, I have...” and click “Next”
- 4.



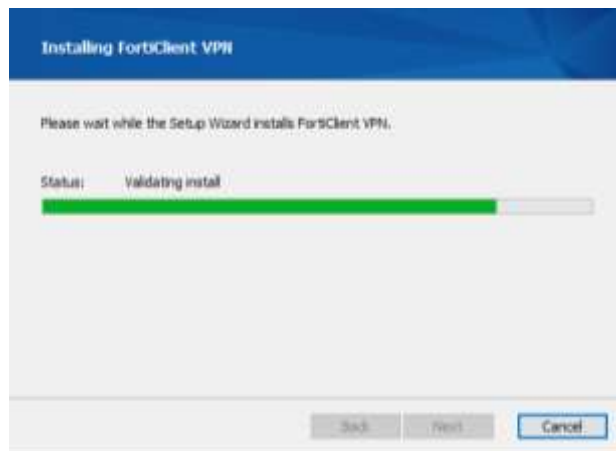
5. Click “Next”



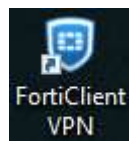
6. Click “Install” button for install to begin the installation.



7. Please wait while the Setup Wizard installs



Then FortiClient will be on your desktop



## Setup Guide VPN (Windows)

1. Double Click on the Icon to launch



2. Click checkbox “I acknowledge..” and click “I Accept” button



3. Click “Configure VPN”



#### 4. Input configure the VPN

- VPN choose type: **SSL-VPN**
- Connection Name: **WU-VPN**
- Description: **WU\_VPN\_Connect**
- Remote Gateway: **vpn.wu.ac.th**
- Customize Port: **443**

Click “Save”

FortiClient VPN

Upgrade to the full version to access additional features and receive technical support.

### New VPN Connection

VPN: **SSL-VPN** | IPsec VPN | XML

Connection Name: WU-VPN

Description: WU VPN Connect

Remote Gateway: vpn.wu.ac.th

+ Add Remote Gateway

Customize port: 443

Enable Single Sign On (SSO) for VPN Tunnel

Client Certificate: None

Authentication:  Prompt on login  Save login

**Cancel** **Save**

5. Login and click “Connect”

FortiClient VPN

Upgrade to the full version to access additional features and receive technical support.

VPN Name: WU-VPN

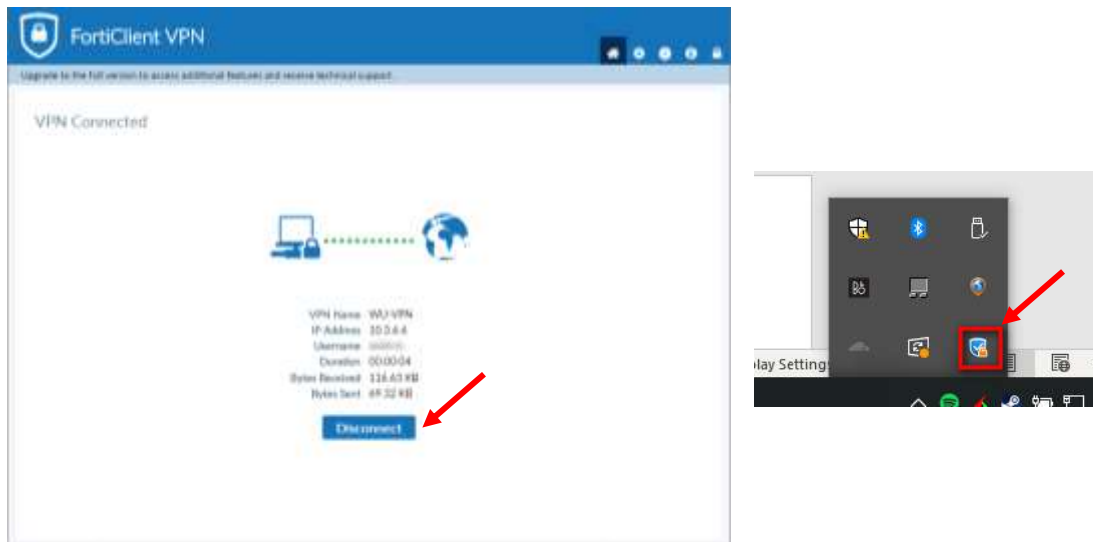
Username: Walailak

Password: w@il@k123456789

Save Password

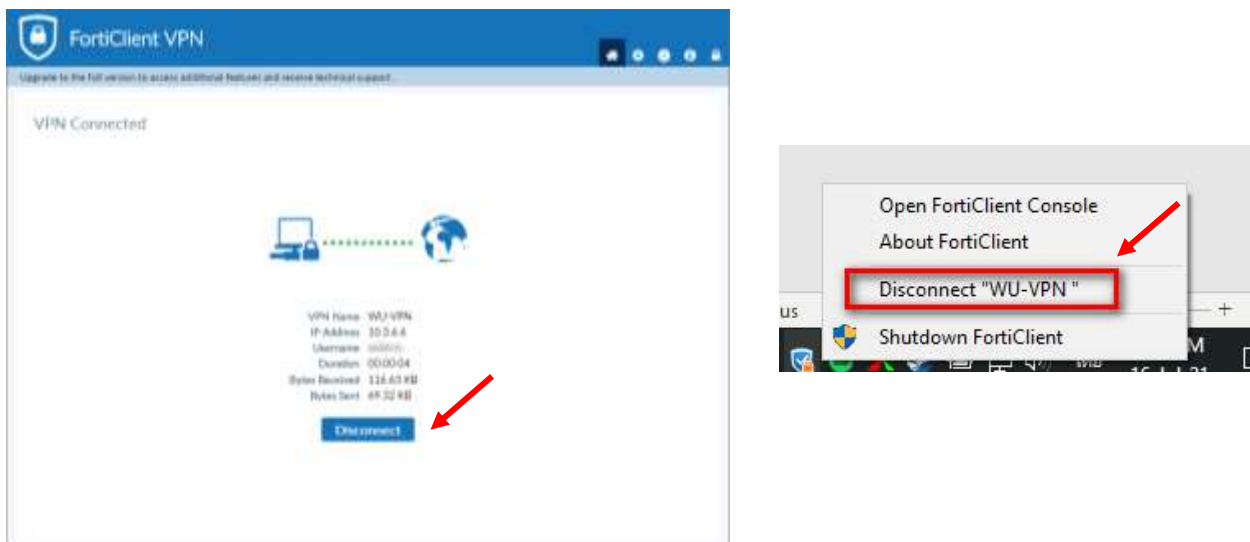
**Connect**

6. When the connection is established, program will show as below



#### Disconnection VPN (Windows)

When you are done with the connection, Right-Click the icon and click  
“Disconnect Company Name VPN”





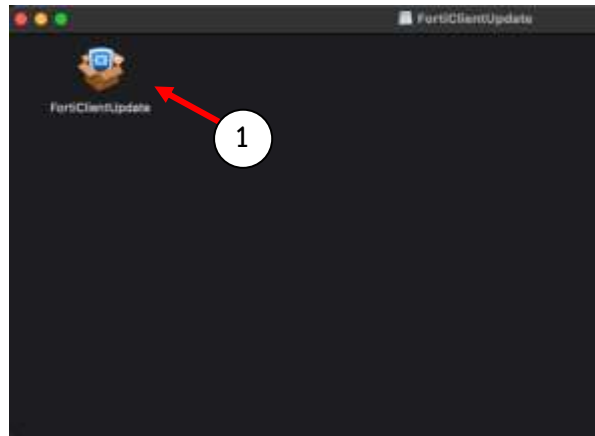
## For MacOS System

1. Choose download VPN for MacOS



\*Example FortiClient VPN installation file

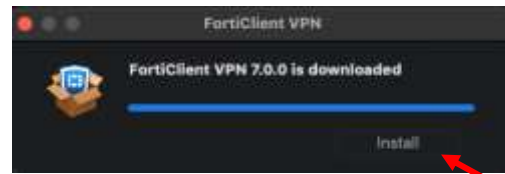
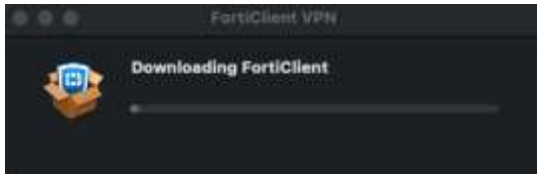
2. Click on the FortiClientUpdate icon



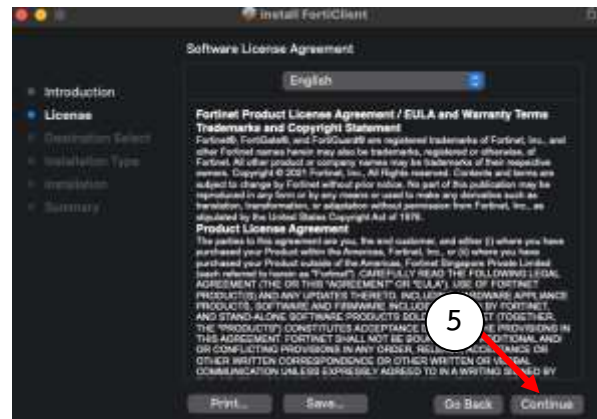
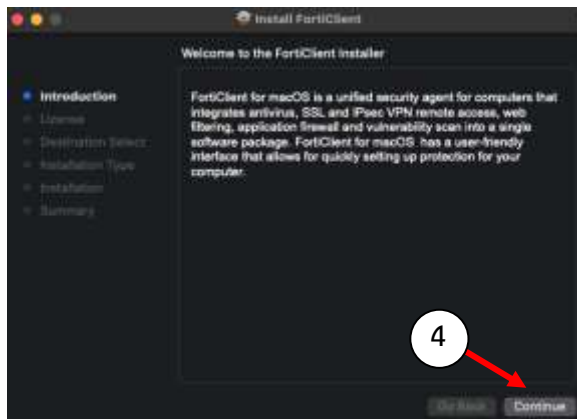
3. Click "Open" button



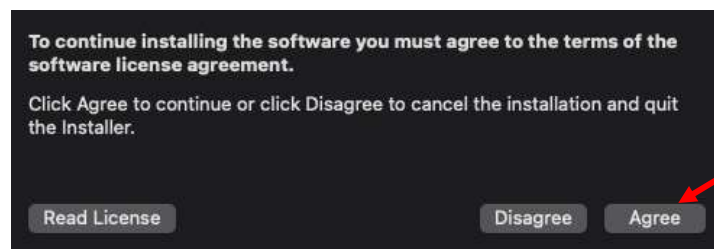
1. Program will be show downloading status via the Internet (speed depends on the user's network connection)



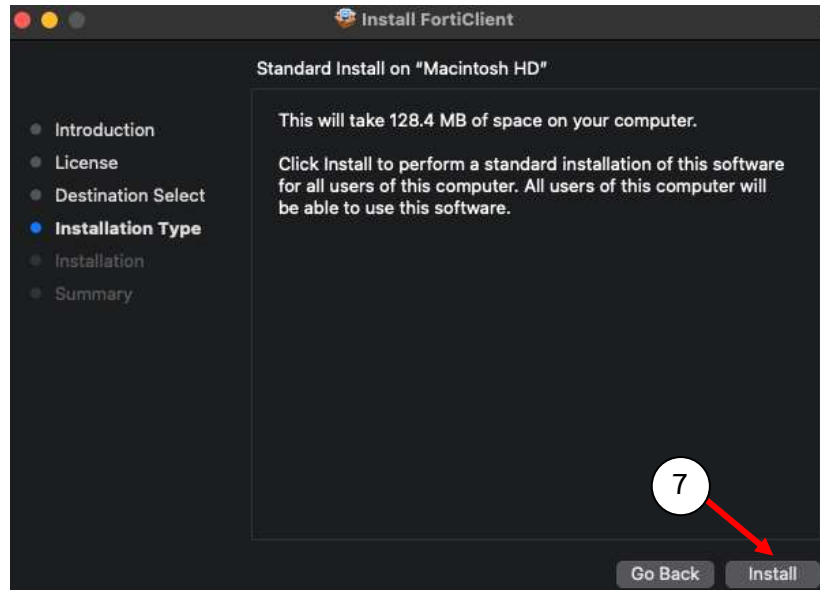
4. Click “Continue”



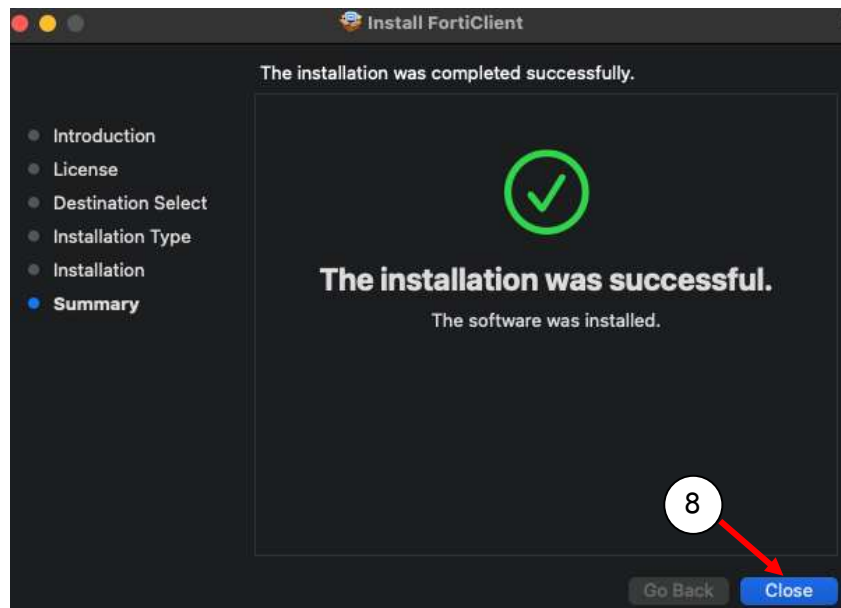
5. Click “Agree”



6. Click “Install”



7. Click “Close”



8. Find program name is “FortiClient”



## Setup guide VPN (MacOS)

1. Double Click on the Icon



2. Click checkbox “I acknowledge...” and click “I accept” button



3. Click “Configure VPN”



4. Input as below

- VPN choose type: SSL-VPN
- Connection Name: WU-VPN
- Description: WU\_VPN\_Connect
- Remote Gateway: vpn.wu.ac.th
- Customize Port: 443

Click “Save”

The screenshot displays the FortiClient VPN configuration window. The title bar reads 'FortiClient VPN'. Below the title bar, there is a notification: 'Upgrade to the full version to access additional features and receive technical support.' The main content area is titled 'New VPN Connection'. It features three tabs: 'SSL-VPN', 'IPsec VPN', and 'XML'. The 'SSL-VPN' tab is selected. The configuration fields are as follows:

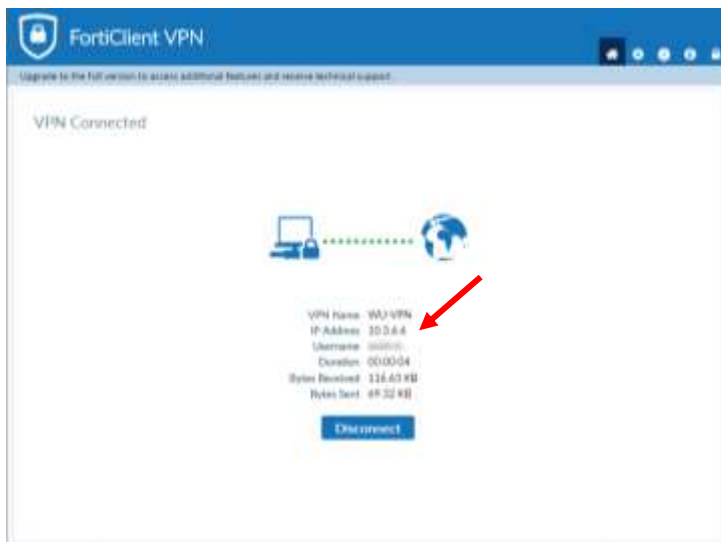
- VPN:** SSL-VPN (selected)
- Connection Name:** WU-VPN
- Description:** WU VPN Connect
- Remote Gateway:** vpn.wu.ac.th
- Customize port:**  (checked), 443
- Enable Single Sign On (SSO) for VPN Tunnel:**  (unchecked)
- Client Certificate:** None
- Authentication:**  Prompt on login,  Save login

At the bottom, there are two buttons: 'Cancel' and 'Save'.

5. Login and click “Connect”



6. When the connection is established, program will show as below



## Disconnection VPN (MacOS)

When you are done with the connection, right click “Disconnect WU-VPN”

